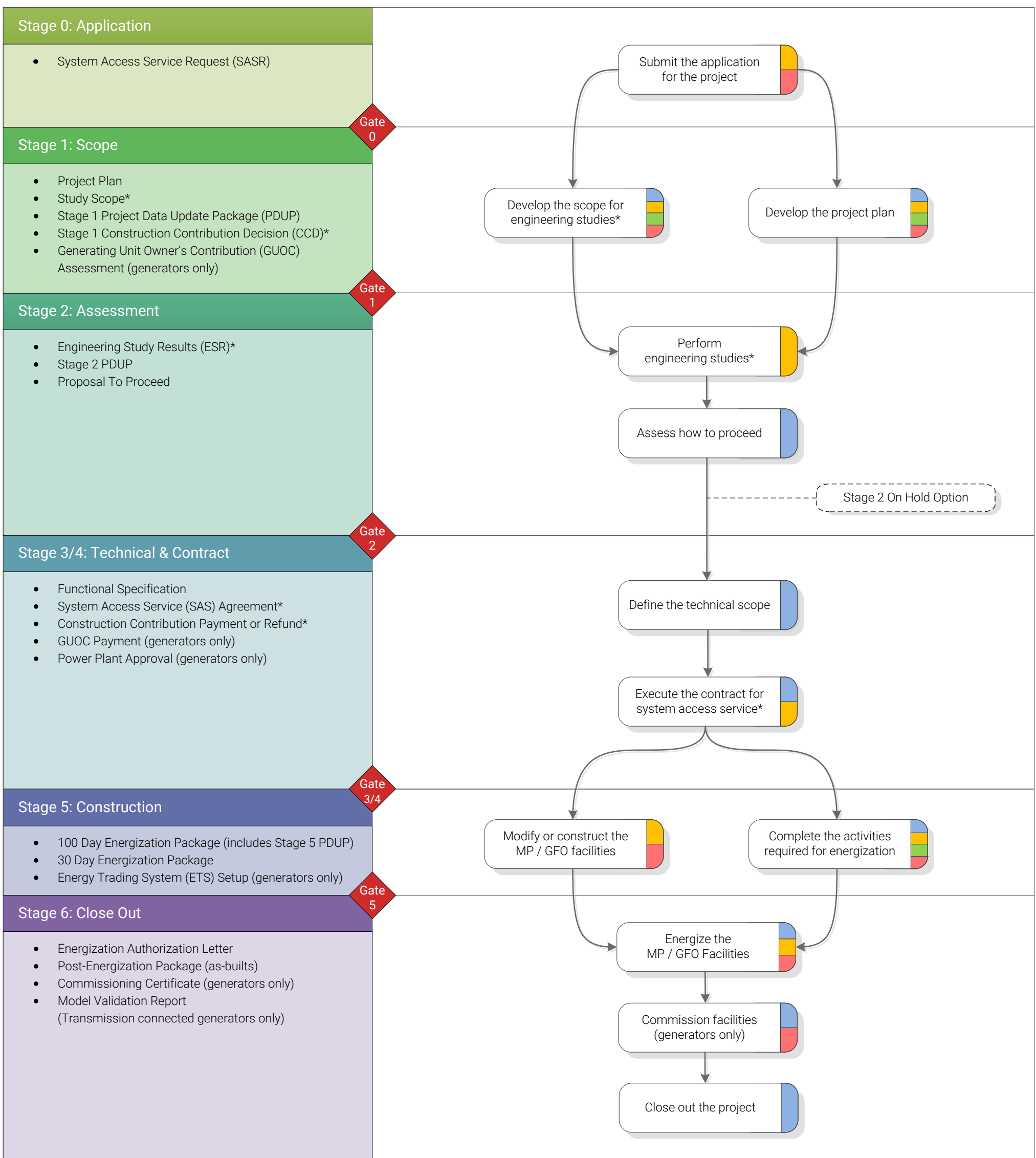


Process Overview

- The Behind The Fence (BTF) Process is followed when a customer is making changes to their existing facilities that the AESO determines will not require the addition or alteration of facilities on Alberta's transmission system, but will require a data submission under Section 502.15 of the ISO Rules, *Reporting Facility Modelling Data*.
- A Distribution Facility Owner (DFO) generally follows the BTF Process when connecting an energy resource to the distribution system, as this is considered an alteration to the system access service that the DFO is receiving from the AESO.
- This process follows a gated approach and is designed to move projects through six consecutive stages. Projects must complete all required deliverables for a stage in order to advance to the next stage.
- Below is a list of some of the key deliverables of the BTF Process, and a high-level flowchart of important activities and the parties generally involved. Because of the wide variety of scope and complexity of projects following the BTF Process, some deliverables and activities may not be required. These optional activities are identified with an asterisk (*).
- See [Connecting to the grid](#) on the AESO website for more detailed information on the BTF Process.

Who is involved in the process?

- Alberta Electric System Operator (AESO)
- Market Participant (MP)
- Transmission Facility Owner (TFO)
- Generation Facility Owner (GFO)



* May not be required depending on the scope and complexity of the request