

ATTACHMENT B SINGLE LINE DIAGRAMS

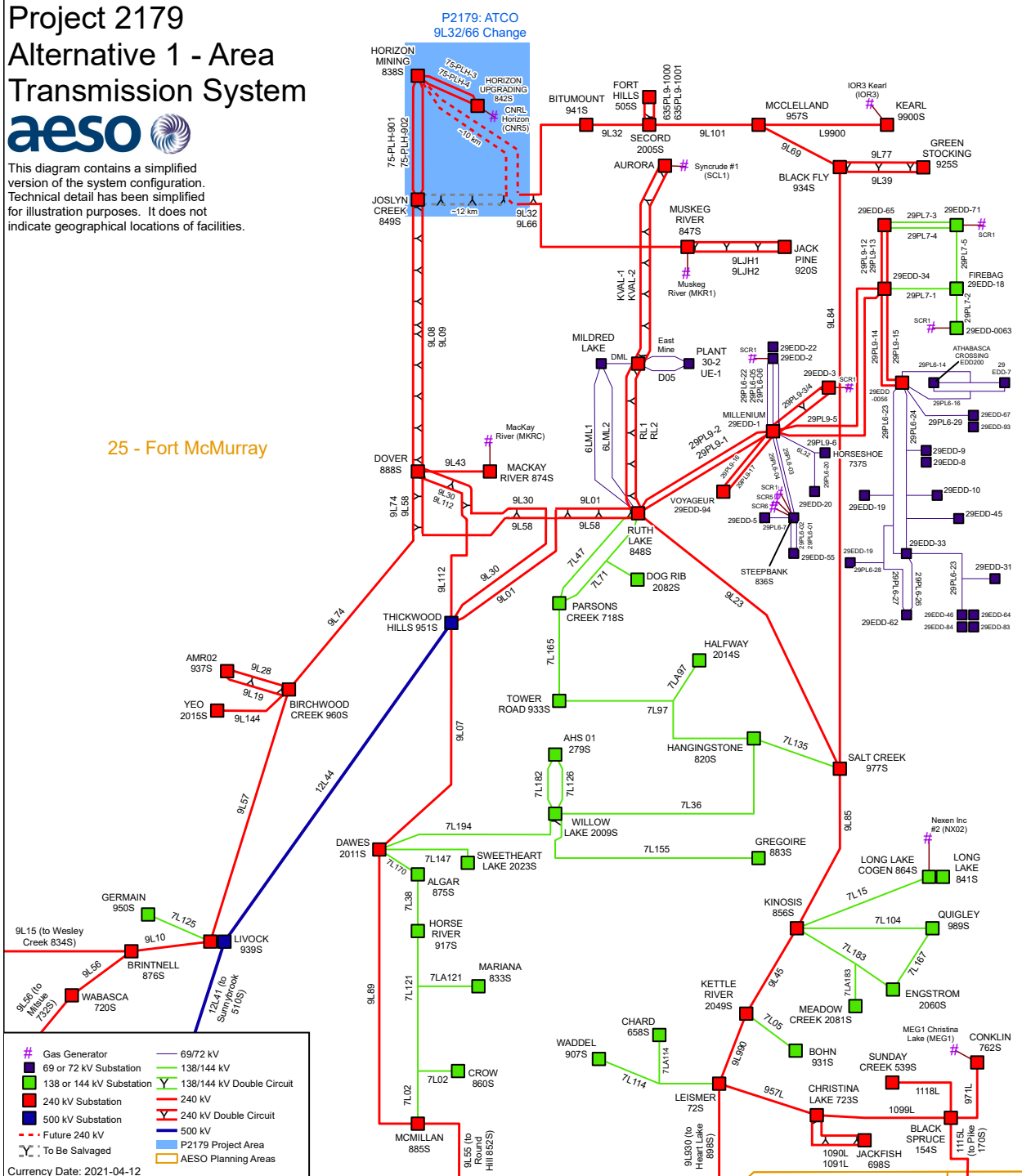
P2179 - Horizon Mining 838S Substation Modification: Area Transmission System

Project 2179 Alternative 1 - Area Transmission System

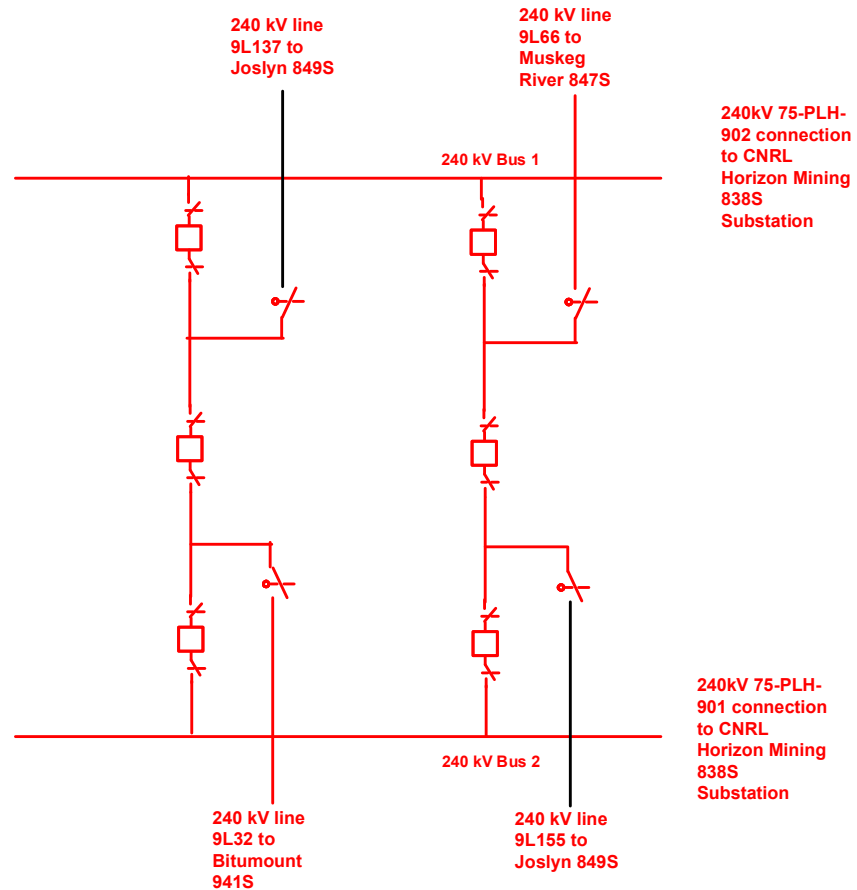


This diagram contains a simplified version of the system configuration. Technical detail has been simplified for illustration purposes. It does not indicate geographical locations of facilities.

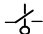

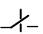


25 - Fort McMurray



Single Line Drawing –Proposed Expansion of Horizon Mining 838S Substation



LEGEND

-  MOD
-  Circuit Breaker
-  Manual Disconnect Switch
-  Proposed Development
-  Existing

NOTE

This single line diagram provides an illustration of a functional arrangement that would meet the need of the proposed project. Although *the legal owner of a transmission facility* is required to maintain the specified functionality, the exact routing and configuration of the project proposed by *the legal owner of a transmission facility* in its facility application may vary slightly from this configuration based on more detailed engineering routing and siting information obtained by *the legal owner of a transmission facility* in preparation of its facility application.

240kV 75-PLH-902 connection to CNRL Horizon Mining 838S Substation

240kV 75-PLH-901 connection to CNRL Horizon Mining 838S Substation



Horizon Expansion 838S Substation Proposed

P2179-838S – SLD -01